



Wyre Borough Council
Please ask for : Marianne Unwin
Assistant Democratic Services Officer
Tel: 01253 887326

Licensing Sub Committee Supplement

**Licensing Committee meeting on Thursday, 15 April 2021 at 6.00 pm in
the Via WebEx.**

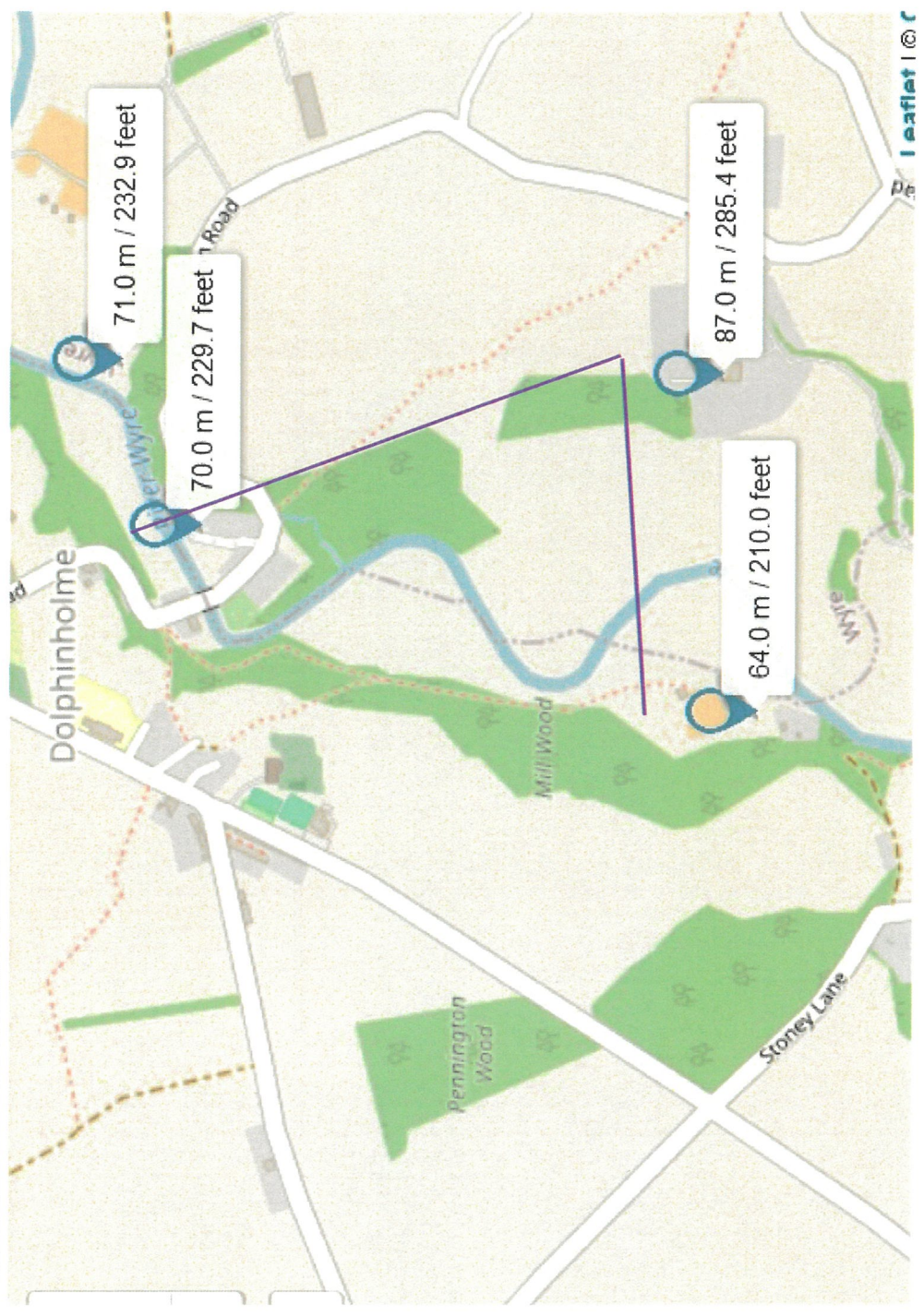
**Members of the public will be able to view the meeting via Wyre
Council's YouTube page.**

- 4. Application for a new Premises Licence – Wyreside Hall, Wagon (Pages 3 - 26)
Road, Dolphinholme, LA2 9DH**

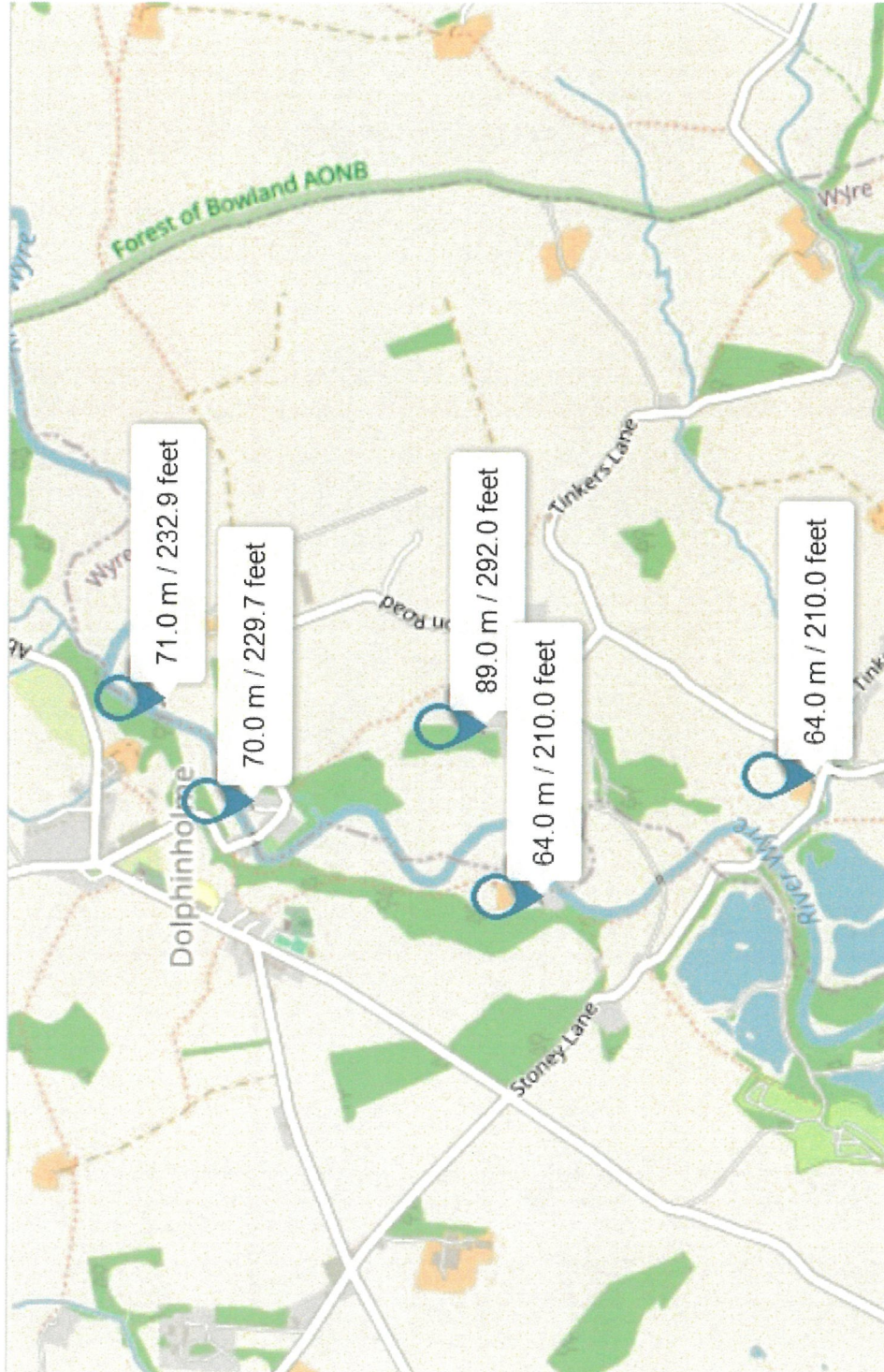
Report of the Corporate Director Environment.

This page is intentionally left blank

Wyreside Hall Elevations – Map A



Wyreside Elevations Map B



Sound Pressure Level (SPL) Calculator

Inverse Square Law- When you double the distance, there will be a 6db loss in SPL

Meters	1	2	4	8	16	32	64	128	256	512	1024	2048
SPL	90	84	78	72	66	60	54	48	42	36	30	24
Feet	3.3	6.6	13.2	26.4	52.8	105.6	211.2	422.4	844.8	1689.6	3379.2	6758.4

The SPL at 1000 feet is 40

Double the Power Rule-When you double the power, there will be a 3db gain in SPL

Wattage	0.5	1	2	4	8	16	32	64	128	256	512	1024
SPL	87	90	93	96	99	102	105	108	111	114	117	120

As a guide:

A whisper is 30db

Normal conversation is 60db

A lawnmower is 85db

Rock Concerts are between 90 and 100db

Normal background sound levels in quiet area's are 50 to 55db (depends on numerous factors)
These levels have also been measured.

Sound Pressure Level (SPL) Calculator

Inverse Square Law- When you double the distance, there will be a 6db loss in SPL

Meters	1	2	4	8	16	32	64	128	256	512	1024	2048
SPL	80	74	68	62	56	50	44	38	32	26	20	14
Feet	3.3	6.6	13.2	26.4	52.8	105.6	211.2	422.4	844.8	1689.6	3379.2	6758.4

The SPL at 1000 feet is 30

Double the Power Rule-When you double the power, there will be a 3db gain in SPL

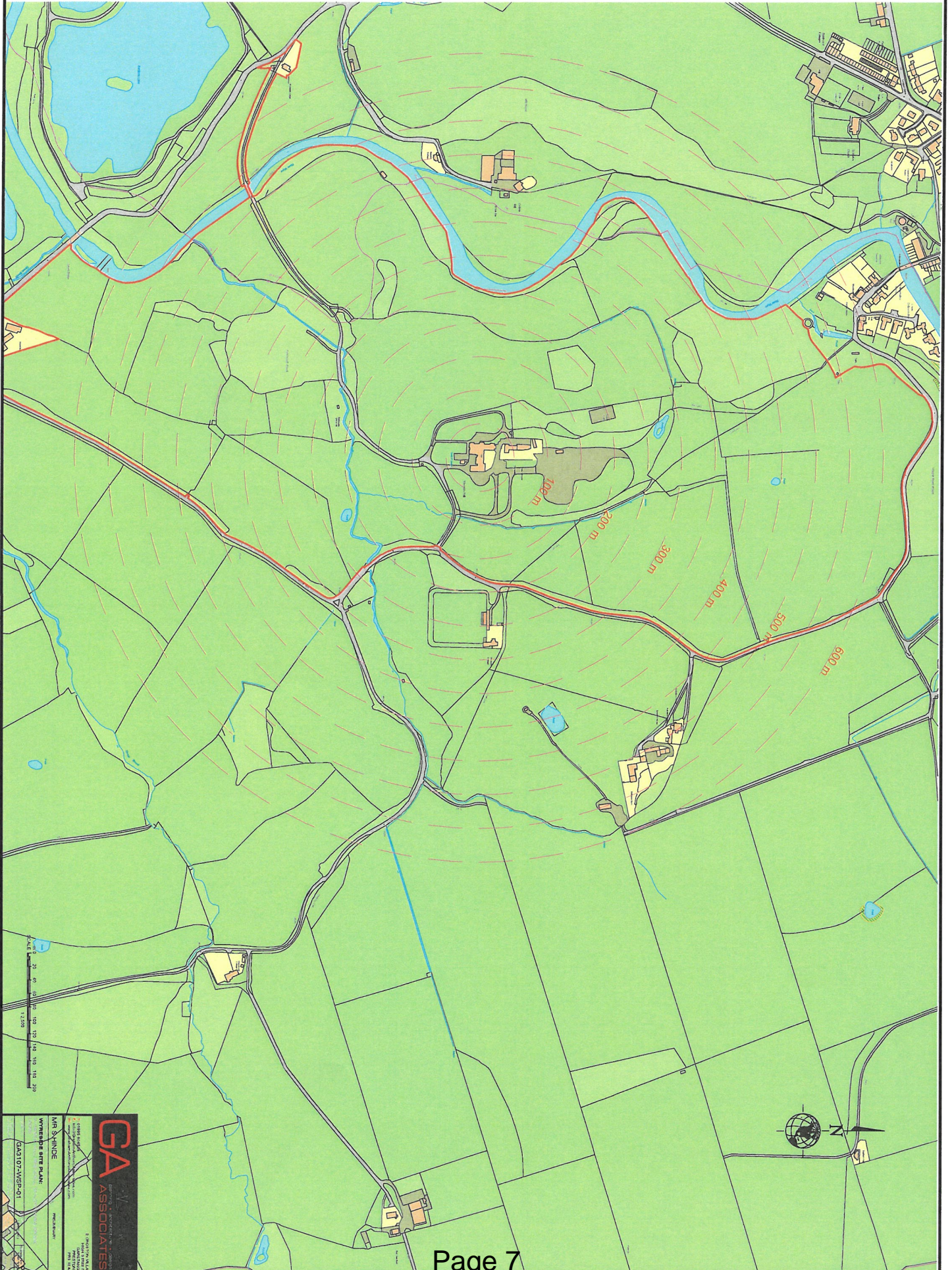
Wattage	0.5	1	2	4	8	16	32	64	128	256	512	1024
SPL	77	80	83	86	89	92	95	98	101	104	107	110

Residences:

- Wyreside Cottage – Distance 250m, (further protected by 12ft wall, and a 6ft banking((see photos A)
- Belvidere complex – Distance 500m (hills, and no direct line of sight) – (See Photo's B)
- Lower Dolphinhoime – Distance 600m plus – (with 2 woods, and an Elevation minus 17m) – (see Photo's C)
- Coreless Mill – Distance 400m, (with an Elevation of Minus 23m)

WYRESIDE SITE PLAN

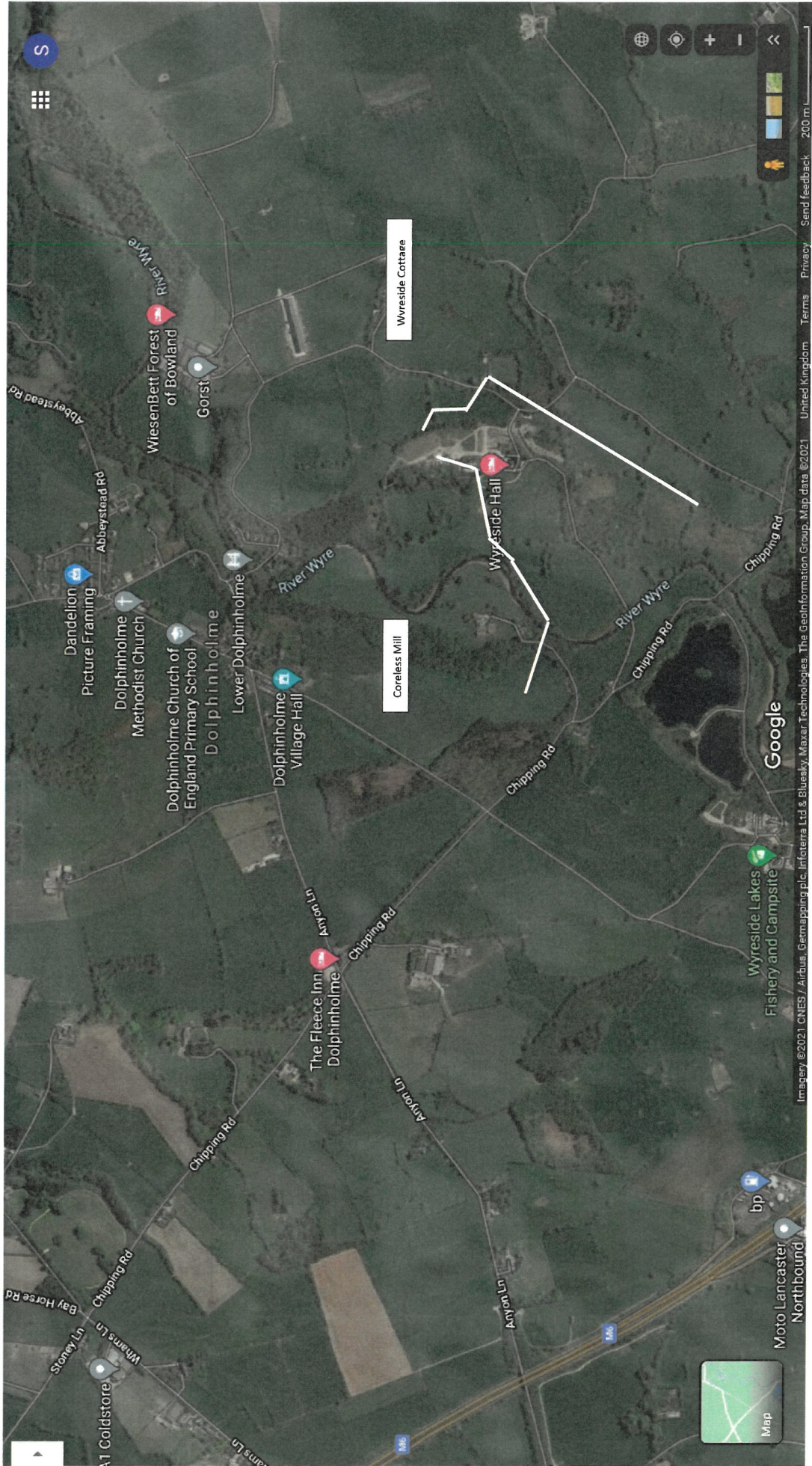
WYRESIDE HALL/ RIVENDELL/ TAYLOR'S FARM/ BROOK LODGE



GA ASSOCIATES
INCORPORATED
1000 W. 10th Street
Suite 100
Wichita, KS 67202
Tel: 316.261.1111
Fax: 316.261.1112
www.gaassociates.com

MR. SYMONE
WYRESIDE SITE PLAN
GA31072WSP-01

Wwreside Hall



Wyreside Hall – Representations of Support

- Pawel Sulz – Resident of Dolphinholme.
Never encountered any Noise, or Light issue's
- Lucy Ellis – lives local, and premises manager.
9 Events, with no complaints
- Stephen Hinde – lives locally.
Assisting in the application, reconfirms that with the previous 9 Functions,
and a very large outdoor Birthday Party, no complaints have been received.
Also could not hear, and tell the functions were taking place at the private residence.
- Mark Gorst – Lives in Dolphinholme, opposite the hall, and confirms he can't hear
any noise.
- John Gorst – Past Parish Council Chair, again lives opposite the Hall, and provides
support for the application.
- James, and Shelia Gardner – acknowledge previous functions, and have not had
issue's that would give reasons for complaint.

Wyreside Hall – Representations Opposing

- M N Rudd – Lower Dolphinholme
Major intrusion of light and sound.
Not clarified or acknowledged previous events, or made any previous complaints.
- Gary Troughton - Lives in Lower Dolphinholme
Again has not acknowledged, and cannot be aware of the previous functions.
He has not heard, recorded, or made any previous complaints.
The comments on Wyreside Lakes, and Dolphinholme House are not relevant.
- Clare, and Karl Klotz.
Claims to be a residential area, and close to hall.
Objecting on Public nuisance, and safety risks.
The Hall is clearly nowhere near the Village, and the comments are just generalised.
- John Klotz.
Similar comments to his wife.
Most of his comments are not relevant, and incorrect.
- Anne Chapman.
Again lives in Lower Dolphinholme
Seems to want the Hall to remain unused as she did back in 2011.
Makes very general, incorrect statements.
Also not aware, and makes no reference to any previous functions.
- Donald Hantom, and Wendy Lawrence.
Members of the local activist group, who look to object to almost everything.
Main gripe the notices on the gates, had to be changed due to application amendments. As they had actively campaigned everybody to object, it is clear they fully understood what the situation was.
They are also not aware of the previous functions held at the hall.

- Suzette Heald, has taken over the lead role in the activist association from Graham Chapman. Would be happy as they were back in 2011 that the Hotel never opened. The objection is again just generalised.
Followed up with second e-mail adding Allen Norris adding generalised noise and light pollution comments.
- Andrew Birchall has taken over from his father with the personal abuse we received in 2011.

We are monitoring his written, and verbal comments, so will not engage further at this time.
- Ms E Collinson, lives opposite the rear of the Hall.
Makes generalised comments about construction noise.
Wants to compare a Farm, to a Hotel, and Wedding Venue.
Despite living opposite the hall, has not recognised, or been aware of the previous 9 functions.
Was again back in 2011 a member of the local activist group.
- Late representation from Andrew Birchall's Mother.
Country people, who want to retain England's Green, and Pleasant Land
Along with her husband was a founder member of the activist group back in 2011, opposing the hotel.

This is obviously our summary of what has in the main been put together by the members of the activist group, who now call themselves the "Dolphinholme Residents Association". We have been made aware, by numerous residents in Dolphinholme of their campaigning from the various members above, trying to drum up support for more people to object, to which to their disappointment has not materialised.

This page is intentionally left blank

